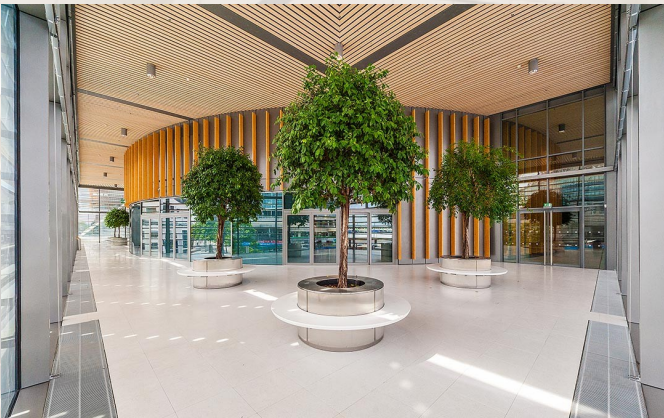




# Conferences, Meetings, Banquets & Special Events

Welcome to The Drum, located within the UK's greenest public sector building and home to a number of flexible contemporary event spaces, terraces and gardens capable of hosting a wide range of events and activities from exhibitions, meetings and conferences to large-scale wedding ceremonies and receptions, corporate entertainment and public performances.



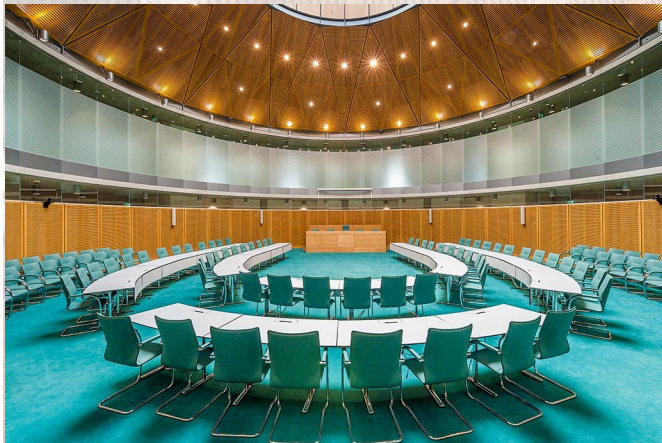
# The Grand Hall

The Grand Hall is a beautiful and modern circular event venue perfect for a special occasion. The Grand Hall is our largest events space. It is surrounded by our Winter Garden and Olympic View spaces, complete with potted trees. Both spaces have floor to ceiling windows offering spectacular private views of Wembley Stadium, Wembley Arena and Square below. These two additional spaces are offered as a package with the Grand Hall for events and provide perfect areas for pre-dining drinks or food service areas or chill out areas.

Olympic View and Winter Garden are also available to hire separately.

We understand that AV is crucial to the success of an event. Whether you require a small scale presentation set up for 8 guests or a complex multi-speaker and presentation set-up for a large audience, The Drum is equipped with a vast range of state-of-the-art AV and staging equipment to meet your requirements. In addition to the integral AV and IT equipment we also have in house professionals who can recommend technical and creative ideas to enhance your event further within your budget.

<b>Theatre</b>	800
<b>Banquet</b>	400
<b>Overall Size</b>	1210 M <sup>2</sup>



# The Conference Hall

On level 3 of The Drum our Conference Hall is a circular double-height space. By day it is flooded with natural light from a stunning glass lantern in the roof. It is perfect for Conferences, Exhibitions and larger meetings. The Conference Hall is surrounded by 8 flexible Board rooms which is ideal for break out spaces to accompany a larger event.

We offer a variety of competitive pricing options whether you are looking for a set daily delegate rate or a tailored quote to meet your specific event criteria. We will work hard to meet your requirements, adding value wherever we can and liaising with caterers and event service providers on your behalf to secure you the best deals.

**Theatre**

150

**Cabaret**

100

**Size**

270 M<sup>2</sup>



# Board Rooms

On level 3 of The Drum we have 8 Board rooms which have fantastic flexibility, with up to 4 Board rooms able to join together. Some of our Board rooms also boast French-door access to our sunny Terrace with fabulous views overlooking the iconic Wembley Stadium, Wembley Arena and Olympic Way. These rooms are perfect for Meetings, Conferences and Training and by night provide a stunning location for corporate hospitality.

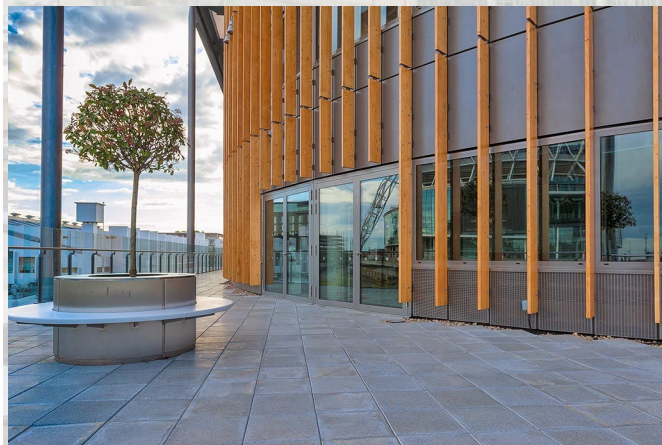


## Audio Visual Facilities as Standard

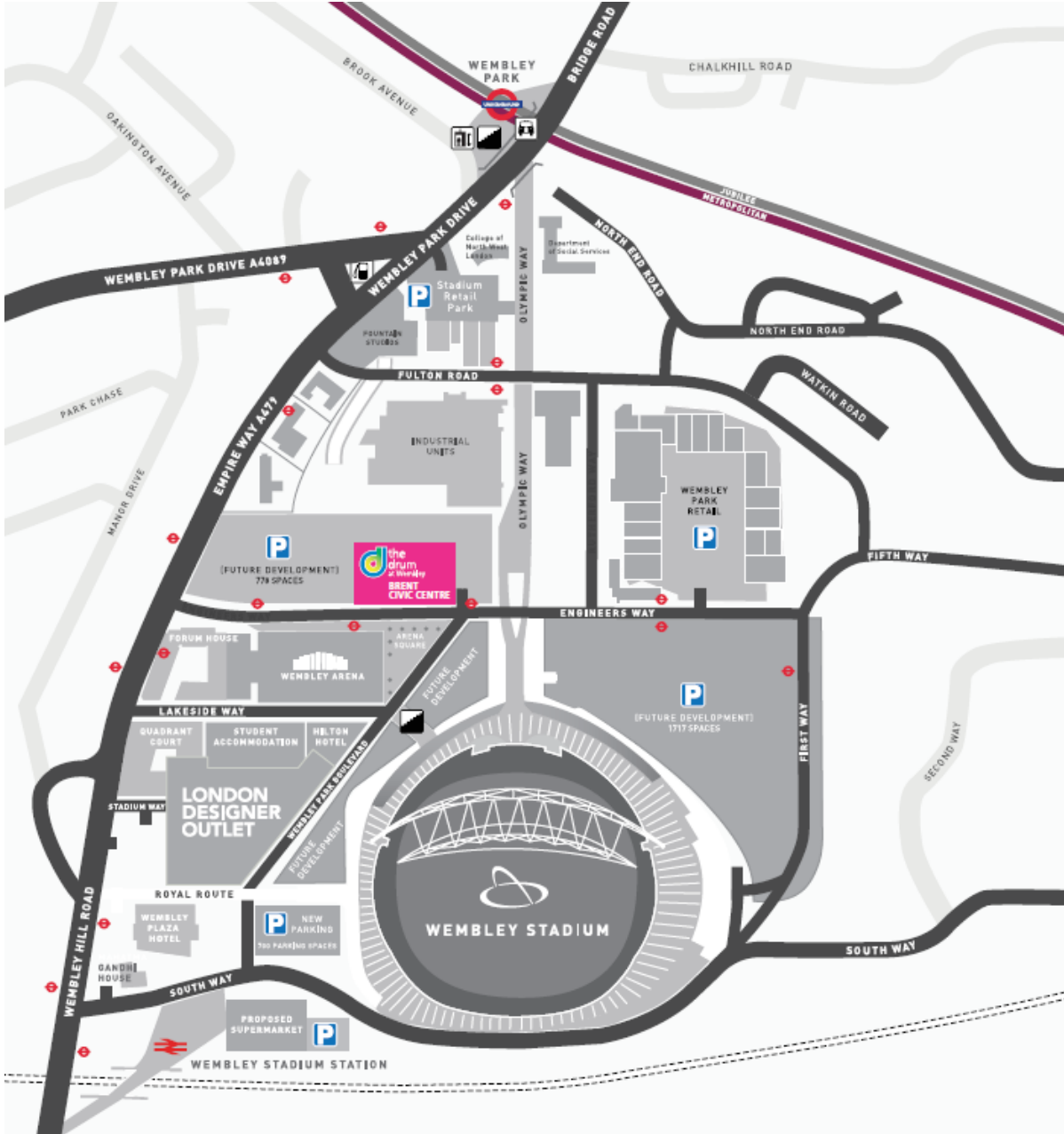
65 inch HD Plasma Screen

Connection for Laptops, iPads etc.

Many other audio visual equipment is available on request.



<b>Board Room</b>	Up to 44
<b>Cabaret / Banquet</b>	Up to 72
<b>Theatre</b>	Up to 70



# Welcome to Wembley

We are ideally located opposite both Wembley Stadium & Wembley Arena.

We are only 10 minutes from Central London by train & tube with access to the Bakerloo, Jubilee & Metropolitan tube and Chiltern & South Eastern trains.

We are also within easy reach of the M1, M4 & M40 motorways. And ample parking closely.

There are plenty of hotels nearby with a total of 1400 rooms.

The London Designer Outlet is a short walk with many restaurants, retail shops and a 9 screen cinema.

**The Drum**

Brent Civic Centre

Wembley

HA9 0FJ

020 8937 4340

[events@thedrumwembley.com](mailto:events@thedrumwembley.com)

[www.thedrumatwembley.com](http://www.thedrumatwembley.com)